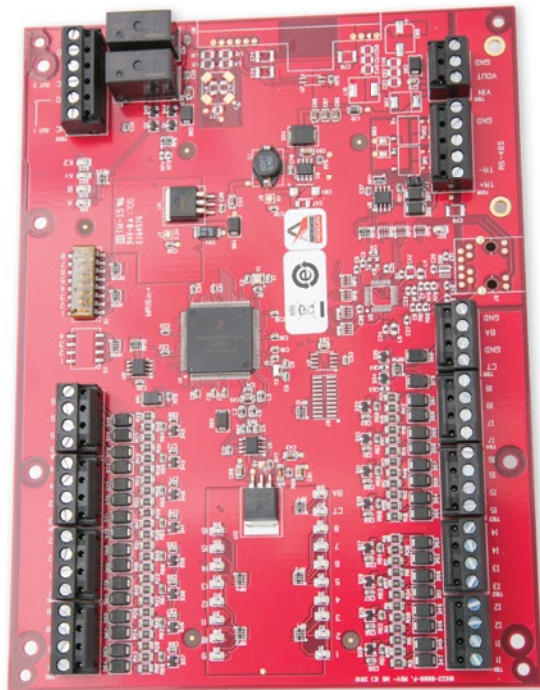


The Series 3 Input Board is an interface between any IDenticard PremiSys controller and up to 16 input points. It offers an improved processor and increased memory, plus features an embedded crypto memory chip that provides a secured layer of encryption to onboard sensitive data.

The Series 3 Input Board can be used for a variety of applications, including status annunciation and alarm monitoring applications such as lighting, heating/cooling, door and elevator control. Devices can also be activated by the condition of selected system devices, either locally or regionally, without host intervention.

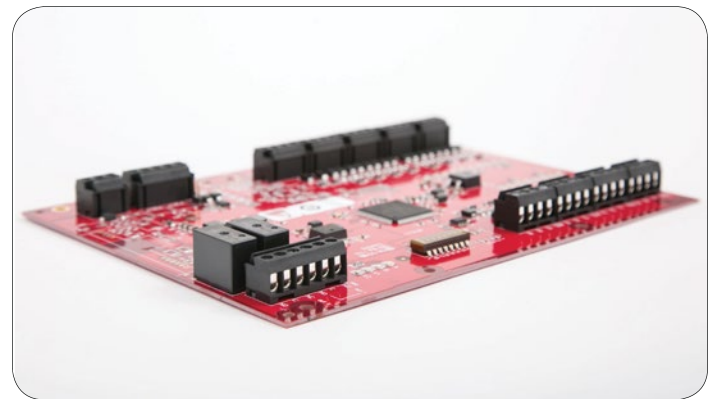
The panel is dedicated to point control and monitoring, enabling support of 16 general-purpose input circuits. The circuits can be individually set for sensitivity ranges, timing parameters (normally-open or normally-closed operations) and end-of-line resistance values. They can also be declared supervised and non-supervised. Two programmable relay outputs are configurable for fail-safe or fail-secure operation, supporting "On," "Off," "Pulse" and "Repeating Pulse" commands.

The Series 3 Input Board is the latest generation door interface module for IDenticard PremiSys intelligent controllers.



Features

- 16 programmable inputs; 2 programmable relay outputs
- AES 128/256 bit data encryption
- UL 294 recognized, CE compliant, FCC, RoHS
- Configurable input parameters
- Initiates commands by operator, by time schedules, or by events
- Allows for easy and compact clustering of up to 16 uniquely monitored devices
- RS-485 host connectivity
- **Open Architecture:** High performance, reliable platform
- **Easy Expansion:** Adds functionality and flexibility to existing access control systems
- **Enhanced Security:** Embedded crypto memory chip provides secured layer of encryption to protect sensitive data
- **Versatile Interoperability:** Same reliable interface and identical footprint as Series 2 Input Board, enabling seamless upgrades for existing installations



PremiSys™ Series 3 Input Board

PREM-BRDIN-S3

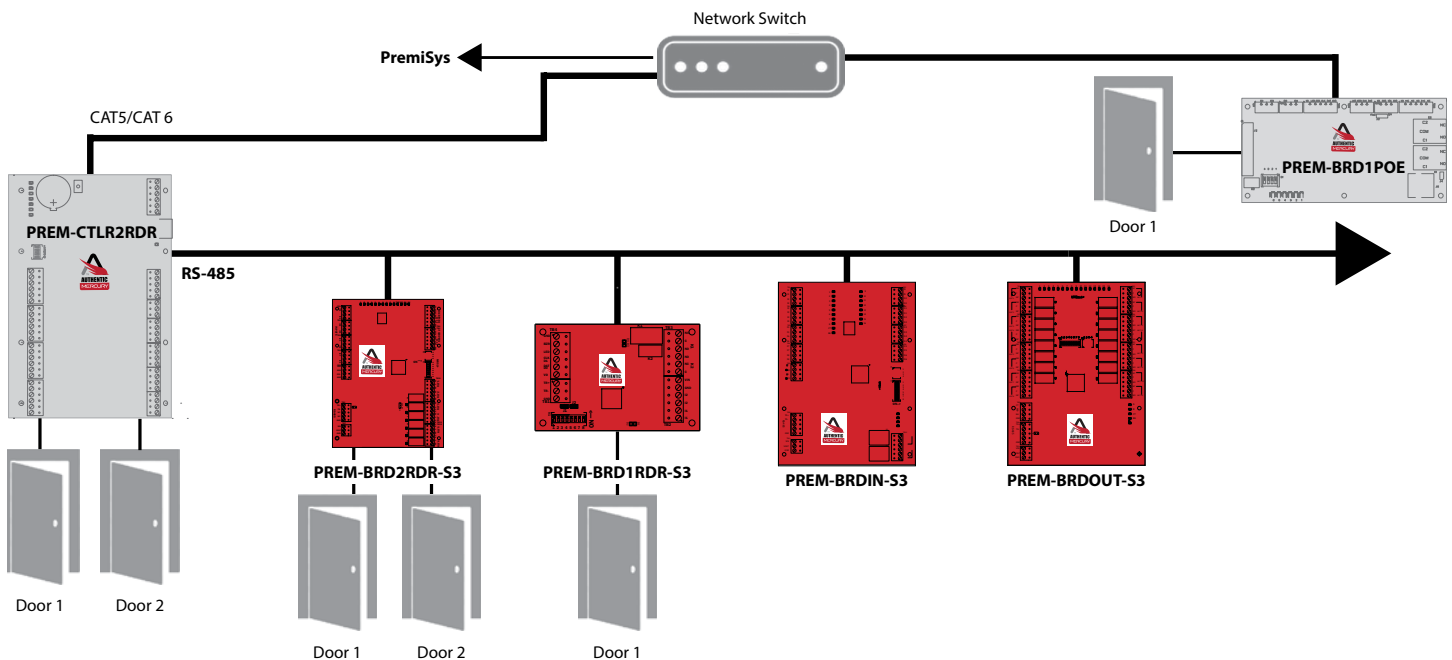
PremiSys™ Series 3 Input Board

Specifications

Primary Power	12-24 Vdc +/- 10%, 350mA maximum
Host Communication	RS-485, 2-wire, 4,000' (twisted pair with shield, Belden 9841)
Inputs	16 General Purpose: Programmable circuit type 2 Dedicated: Tamper and Power Monitor
Output Relays	Two Form-C Relays: Normally open contact (NO): 5A @ 30 Vdc resistive Normally closed contact (NC): 3A @ 30 Vdc resistive
Dimensions	6.0" W x 8.0" L x 1.0" H, (152mm W x 203mm L x 25mm H)
Temperature	0-70 °C operational, -55-85 °C storage
Humidity	5 to 95% RHNC
Standards	UL 294 recognized, CE compliant, RoHS, FCC Part 15 Subpart B

Application Notes

The Series 3 Input Board provides the capacity to link, control and respond to an array of sensors. With its RS-485 connectivity, the Series 3 Input Board can be clustered or distributed to best suit each installation environment.



The Authentic Mercury open platform delivers quality assurance derived from the most proven and reliable hardware in the industry. Driven by our engineering excellence and technology leadership, Authentic Mercury hardware is designed as an access control platform that easily encompasses emerging technologies, changing industry standards and evolving system environments.

148 E. Stiegel Street • Manheim, PA 17545
TEL 800.233.0298 • FAX 717.427.1654 • www.IDenticard.com

All brand and product names mentioned may be trademarks or registered trademarks of their respective companies in the United States and/or other countries. See current IDenticard® price list or other product documentation for warranties and limits of liability.

Copyright ©2018 IDenticard Systems Worldwide, Inc.

All rights reserved. Rev. 5/18

0518-016AC